

TotalStream



Large Scale High Performance

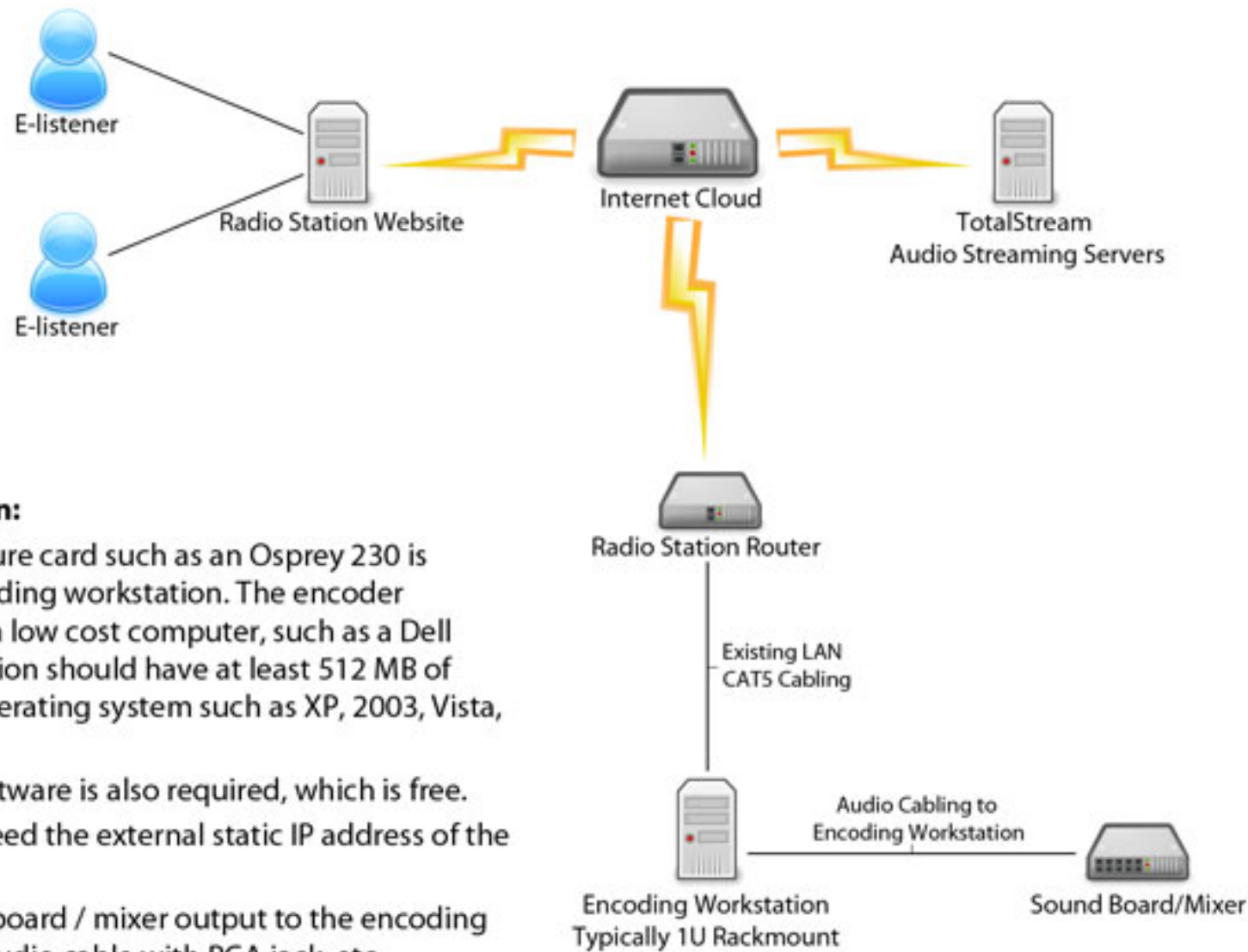
VIDEO STREAMING



TotalStream

PO Box 41270
5190 Neal Road Suite 430
Reno, NV 89504
(877) 640-6608

Radio Station Audio Streaming



At the Radio Station:

During setup a capture card such as an Osprey 230 is installed in the encoding workstation. The encoder workstation can be a low cost computer, such as a Dell SC420. The workstation should have at least 512 MB of RAM. A Windows operating system such as XP, 2003, Vista, etc is required.

Media encoder 9 software is also required, which is free.

Note that you will need the external static IP address of the workstation.

Connect the sound board / mixer output to the encoding workstation, using audio cable with RCA jack, etc.

Connect the workstation to the radio station LAN using Cat5 cabling.

Content will then stream to internet, and the stream will be replicated by TotalStream's streaming servers to the e-listeners.

E-listeners:

To listen to live content, the user clicks on a link on the radio stations website. Most stations have a small pop-up web page for this purpose. The listener is then connected to TotalStream's streaming server.

TotalStream

Totally Committed
to Our Customers