

TotalStream



Large Scale High Performance

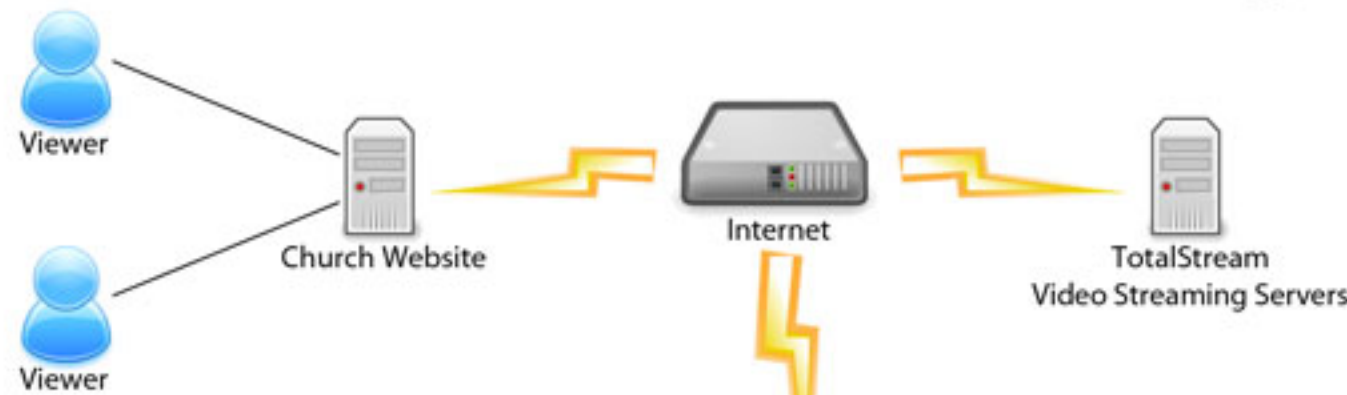
VIDEO STREAMING



TotalStream

PO Box 41270
5190 Neal Road Suite 430
Reno, NV 89504
(877) 640-6608

Church Services Video Streaming



Process:

Connect the encoder workstation to the internet. We recommend a minimum of dedicated T1 bandwidth per encoder. The encoders must have a static IP address, provided by your internet service provider (ISP). If you have an existing T1 (or business class DSL line) it is critical that the Sunday school teachers refrain from using the internet while church services are being streamed.

The encoder workstation can be a low cost computer, such as a Dell SC420. It should have at least 512 MB of RAM. A Windows operating system such as XP, 2000 or 2003 is required.

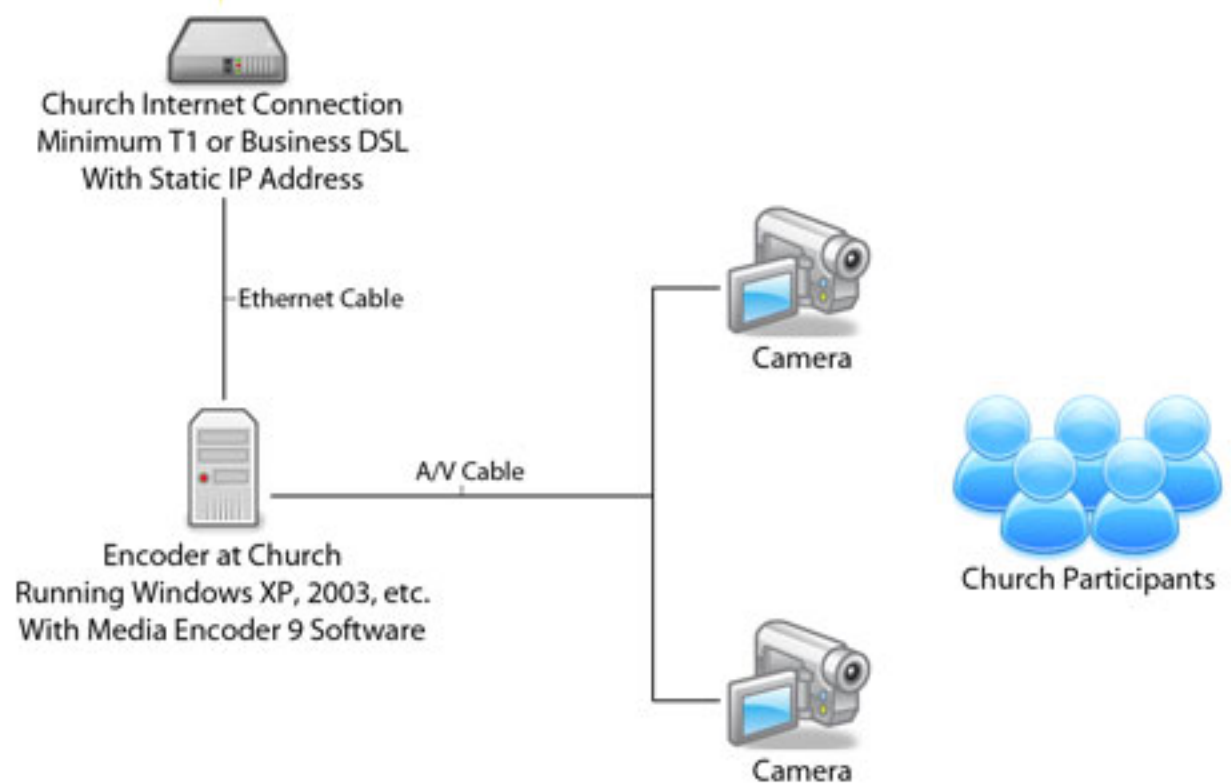
Media encoder 9 software is also required, it is free.

Connect the camera and microphone to the encoder, using normal A/V cabling.

Content will then stream to internet, and stream will be replicated by video streaming servers to the viewers.

Viewer:

To watch live content, viewer clicks on a link on the church website. Viewer is redirected to TotalStreams video streaming server.



TotalStream

Totally Committed
to Our Customers